



EMMANUEL CHRISTIAN SCHOOL

Newsletter

'Supporting parents as they lead their children spiritual growth and educational excellence by teaching and living Biblical truths.'

Tuesday 25th May 2010

Tena koutou te whanau

A very big, "Thank you," to Mrs Down and Room 5 who organised our Fantastic Friday Slum Simulation. The game ran smoothly as a result of your hard work and careful planning and was enhanced by the support of staff and extra parents who gave a willing hand or two. Thank you those people also. Everyone enjoyed the day and there were many who wanted to play on throughout the afternoon. The experience helped us to empathise with those for whom these harsh circumstances are the reality of life. The reaction of children, subjected to a trip to the "Health Clinic" because of leprosy, set me thinking of those we read about in the Bible. Lepers were shunned by society because people believed the disease was a result of sinfulness and highly contagious. Yet Jesus loved them. He loves us too – no matter what we've done, no matter how we look, no matter what other people think about us. That's compassion. Let us love with this same love.

If you would like to take away some of the boxes left over from the Slum Simulation please help yourself to the ones in the garage. Also, if you want the toy donations returned please see Mrs Down.

MIDDLE SCHOOLING

MORE THANK YOU'S to Parents of Year 5 & 6 students who completed the survey regarding Middle School enrolment intentions.

A brief summary of the results has been prepared by Andy van Ameyde who is Co-ordinator of the Christian Schools Network. Andy writes:

- 1: Nearly all respondents have had an association with the school for more than 2 years. This gives confidence that the results are from those who have had a sufficient association with the school to form an accurate opinion of how ECS functions.
- 2: Just under half of the respondents had attended the Middle School Forum and nearly all found the forum helpful or very helpful
- 3: The Forum had caused a number of families to change their enrolment intentions.
- 4: 72% (20) of the respondents indicated that they intended to enrol their Year 5 or Year 6 child into Year 7 at ECS.
- 5: Of the 72% who answered positively in (4) above, 70% (14) indicated a current intention to enrol at year 9 at ECS.

Detailed survey results will be forwarded to the Board of Trustees and Proprietors for their consideration.

Next Steps: The school's leadership groups are working towards the establishment of an Educational Focus Group which will develop some recommendations as to what the educational delivery of a middle school at ECS might look like.

Thank you, Andy.

Research Project. This week all of the children in Years 5-8 have been given, for homework, the Australasian Research Project for this year. At the end of this week Mrs Garrett will collect the papers in and select the children who will be Emmanuel Christian School's entries for 2010. The research will end and be submitted by June 4.

SCHOOL DINNER!!!! That time of year is rapidly approaching. Please keep the evening of Saturday, August 7 free and get your baby-sitters organised for a Wild West night of fun and a fantastic meal catered by our fund-raising Mums.

NEW! After-School Computer Programme at Emmanuel Christian School- FREE TRIAL!

Bubble Dome has launched an exciting new afterschool programme in 3D Animation, Games Design and Inventions at Emmanuel Christian School this term on Tuesday afternoons. This is open for all students aged 6-11 years interested in Computers, Art, Design, and Inventions. Students will be given a software list so they can continue using it for their own school and personal projects providing hours of learning and creative opportunities! If you are interested and would like to have a free trial of this course, please email us as places are strictly limited and will go quickly. Tel: 0800 GET BUBBLE (438 282) or Email: info@bubbledome.co.nz or Visit: www.bubbledome.co.nz.

Thursday this week Room 7 will be heading off to the Papanui Youth Trust to experience the excitement of rock climbing and other adventure based activities. This will be a whole day event and the students will be expected to wear mufti to school. This must include appropriate shoes for the climbing – sneakers or other closed sport shoes. Mr Walmisley also recommends a bigger than normal lunch and plenty to drink as the day will keep the students very busy. There is no charge for this event as the Trust has done us a very sweet deal due to us being a Christian school and all that!



Thank you to all who took part in the 40 hour famine. The next step is to approach your sponsors and collect any donations. It would be wonderful to have all money and famine books in to the school office within the next week so we can send the money off to World Vision in one payment before the end of June.



Plastic bags: Once again we need 'grocery' type plastic bags. These bags are extremely useful around the school and save us purchasing bags to line classroom rubbish bins. Thank you.

School Fundraiser: Cards, giftwrap, stationery for sale. Phoenix Trading sells a fabulous range of greeting cards, gift wrap, invitations, thank-you cards and stationery. Our cards are gorgeous, great quality, eco-friendly and very reasonably priced at \$4 per card or \$3.50 each if you buy 10 or more cards. These unique products are available for you to buy with 10% of total sales going to ECS.

If you'd like to view some of these lovely products please pop into the school office, where a display is set up, and pick up a fundraising pack including a catalogue and order form. To place an order simply return the fundraising pack with the order form completed and payment included to the school office by Thursday

Attendance: Please remember to telephone the school office, with a brief explanation, if your child is going to be late or absent any day. We have a legal requirement to keep accurate attendance records and your assistance is vital to this process. If we have no information regarding your child's absence we are required to mark the child as truant. If you are removing your child from the property at any time during the day please personally report this to the office so the roll can be marked accordingly.

FROM THE EPT: ATTENDANCE DUES

Recently I sent out statements to update parents on attendance dues owing. A significant number of people have not paid for Term One yet nor even completed payments from 2009. If you are in this situation please update payments as soon as possible. Once again I ask that you clearly identify payments. Use the invoice number or family name with initials. Using your child's name is of no help.

Joseph McKone

Executive Officer, EPT

Winter Sports: Sincere apologies to all involved in Winter Sports for the break-down in communication which resulted in us having no transport to Sport last Friday.

Term 2 Calendar

Date	School Event
Friday, May 28	Room 1's Celebration Assembly – everyone welcome
Thursday, June 3	Board of Trustees meeting 7:00 pm in the staffroom
Friday, June 4	Room 6's Celebration Assembly – everyone welcome Research Project ends Years 5-8
Monday, June 7	Queen's Birthday Holiday
Friday, June 18	Room 7's Celebration Assembly – everyone welcome
Friday, July 2	Instantastic Friday and End of Term
Monday, July 20	Beginning of Term 3

Community Notices

Belfast Netball Club Cake Stall Saturday 29th May @ Belfast Rugby Club Rooms 18 March Place, Belfast. Please come and buy some yummy cakes and biscuits to support girls from Emmanuel who play for the club.

“Classics up close”

A Family concert by the New Zealand String Quartet

What happens when Goldilocks discovers that the three bears are musicians? Could the Pachelbear Canon provide a clue? And can a violin really hold a conversation?

These and other questions will be answered at a unique Family concert by the New Zealand String Quartet in Christchurch in June 2010. In a programme designed for a family audience with children aged 4 years and up, the engaging members of the New Zealand String Quartet will get up close and classical with short performances, audience participation and lively musical chit chat. This special concert will appeal to children, parents and grandparents. Programme length: 1 hour

**Great Hall, The Arts Centre,
Monday June 7th (Queen's Birthday) 2pm**

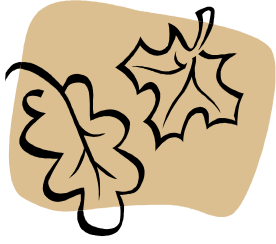
Bookings at Ticketek, www.ticketek.co.nz phone 0800 TICKETEK



322 Sawyers Arms Road
Christchurch.
Ph 359 3595
Principal: Mrs Jill Garrett

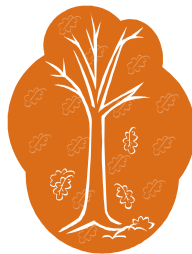
‘Walk as children of light’

Room 2's Amazing Autumn Ideas



In Room 2 we are learning to write descriptions. We had fun playing in the leaves and celebrating Autumn. Here are some of our stories.

- Autumn leaves falling down look like...
-they are rolling in the air like marbles. Noah L.
 -spinning hearts. Zack
 -little butterflies. Amy
 -little raining lollipops. Ryan
 -a round fur ball. Ava
 -they are going around in circles like a merry-go-round. Poppy
 -colourful snow. Natalie
 -spinning tops going around. Samuel
 -birds flying. Sophia
 -they are dancing onto the classroom wall. Faith
 -they are flying like a seagull. Grace
 -they are walking in the air. Poppy
 -they go straight like a tsunami. Emily
 -hands spinning around on a clock. Isaac
 -falling stars. Noah U-R
 -rain falling. Jordan



Well done Room 2. You have wonderful ideas.